

# Professional Drafting Service LiDAR Scanning

**Simplify field measuring. Accumulate relevant data efficiently.**

Professional Drafting Service (PDS) is a growing provider of 3D laser scanning services and the only service provider in Western New York. LiDAR is the latest method to capture the physical environment and represent it in a 3-dimensional way. This has virtually made the use of traditional field measuring with a tape measure, pen, and paper, obsolete.



## LiDAR | Light Detection And Ranging

**LiDAR isn't just useful in the AEC industry, it can be useful in any industry.**

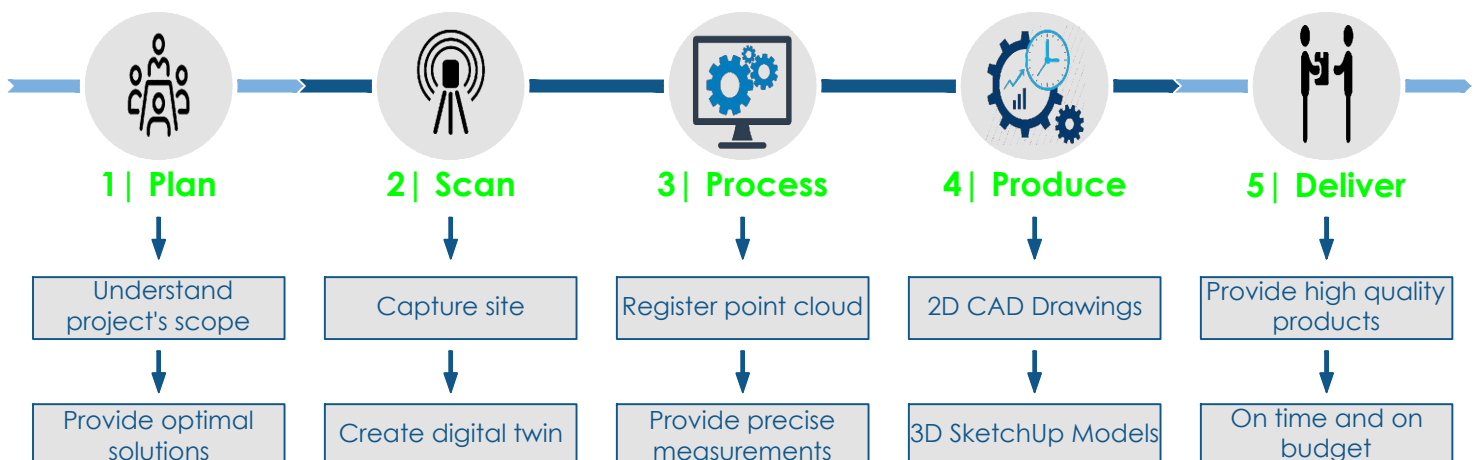
### LiDAR For: Architecture Engineering & Construction (AEC)

LiDAR can be used to create existing condition drawings. This provides the ability to prepare everything from 2D CAD plans to a 3D SketchUp Model. It can also be used to document the entire construction process and to capture mechanical, electrician, and plumbing before the walls are closed up at a high level a detail.

### LiDAR For: Any Industry

It makes field measuring much easier and provides much more data at a faster rate and completely eliminates the process of having to field measure by hand. For example, it can be used to document damage for a insurance claim, preserve historic architecture when no documents exist and even measure pipe diameter and slope in wastewater treatment plants.

*With all the different possibilities, LiDAR Scanning makes field measuring effortless with unlimited data collection and allows it to be useful in for any industry.*



# The Benefits of LiDAR

## Save on Time and Money

- Produce accurate design plans from the start
- Reduce change orders, delays, and associated fees by having any and all information readily available
- Measurement gathering and photo acquisition simultaneously which saves on in-field labor costs



## Capture Accurate Data

- Automated survey grade self-leveling and full automatic calibration that provides precise data for every scan
- Dimensionally accurate with measurable and sharable data set from Trimble Scan Explorer



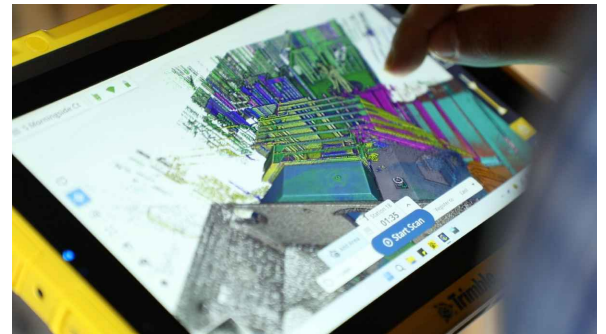
## Optimize Efficiency

- Eliminate on site disruption and multiple revisits
- Scan durations up to 15 minutes per scan to gather more information with less equipment maneuvering
- Captures more information than traditional means of tape measure, pen, and paper

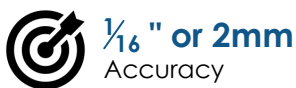


## Industries We Serve

- Architecture
- Construction
- Energy & Utilities
- Healthcare
- Historic Preservation
- Industrial Facilities
- Manufacturing Plants
- Water & Wastewater Treatment Plants
- Universities, Colleges & Schools
- Pharmaceuticals
- Stadiums & Theatres
- Processing Plants
- Oil & Gas
- Insurance Claims



....and more!



**1/16" or 2mm**  
Accuracy



**262' or 80m**  
Scan Distance



**1:34**  
Scan Duration



**3x**  
Faster Than Traditional Means



Learn more about LiDAR Scanning at  
[www.CADdrafting.com/lidar-3d-laser-scanning](http://www.CADdrafting.com/lidar-3d-laser-scanning)

## Professional Drafting Service

Architecture | Engineering  
Construction Support | LiDAR Scanning

255 Great Arrow Avenue | Studio 102  
Buffalo, New York 14207

Call: 1-800-358-0288 | Email: [info@caddrafting.com](mailto:info@caddrafting.com)