

# Professional Drafting Service

Architecture | Engineering | Construction Support | LiDAR Scanning

## EXPEDITE YOUR LiDAR SCAN:

7 Factors to Consider Before  
Requesting a Quote

Preparing the right information before you request a quote for LiDAR scanning services can bring huge benefits.

Tell us everything we need to know about your project up front and you will speed up the quoting process, streamline the work, and save yourself a lot of time and money. Here are the seven things you should know (or try to figure out) about your project before requesting a quote.



## FIRST FACTOR

### The Final Application

We will need to know what goal you want to achieve by obtaining a laser scan or a 3D model.

If you aren't sure of your application, here are a few examples for reference:

- Obtaining an accurate record of a historical building
- Gathering window measurements
- Generating 2D floor plans of an office for space management
- Creating a detailed BIM model of an industrial facility
- Performing clash detection as part of planning to move a large piece of equipment

## SECOND FACTOR

### Scope of Work

To give you an accurate quote, we will need to know the details of the space you want them to capture.

Gather information like:

- How many square feet?
- How many floors? Rooms?
- Is it occupied? Abandoned?
- Does the project cover the interior? Exterior? The roof? All three?
- Does the space include a lot of glass or other highly reflective surfaces such as mirrors?

## THIRD FACTOR

### Final Deliverable

We will need to know what file format you will want the deliverables in. This will allow us to provide a quick turnaround at the conclusion of the project.

Gather information like:

- Do you want us to create a 3D model?
- Do you also need 2D floor plans, elevations or reflected ceiling plans?

#### PRO TIP:

Don't think that requesting a 3D model for your five-story building is going to save you money. Most of the time, we will create a 3D model using 2D plans as guides, which means we are generating the 3D model anyway.

Budgeting time is key. After scanning, the point cloud data needs to be segmented out into various which takes time depending on how many scans were acquired and the complexity of the project.

Make sure to verify your computer and software specs so that we can make sure we are providing the correct file types and versions for your use.

## FOURTH FACTOR Scope of 2D Plans

If you want 2D plans as your final deliverable, we will need to know how much of the space you want drafted and how detailed you want the plans to be. These details may sound unimportant to know so early in the process and as a result, can change the price of your project drastically.

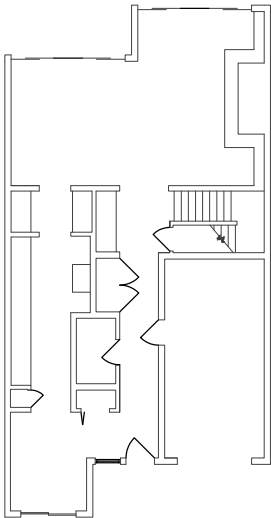
### Answer these questions:

- Do you want true as-built documents, or are you looking for a design development plans that shows plumb walls and 90° angles?
- Are you looking for a basic 2D plan, with architectural elements like columns and beams only?
- Or are you looking for something more detailed, for instance a plan that includes MEP?
- How detailed do you want your plan?
- Do you want elements in different rooms drafted at different levels of detail?

### Low Detail

#### Includes:

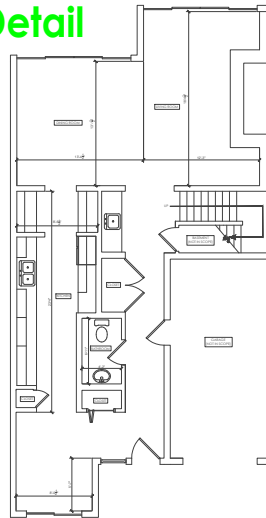
- Wall thickness
- Generic door and window blocks



### Medium Detail

#### Includes everything from Low Detail and:

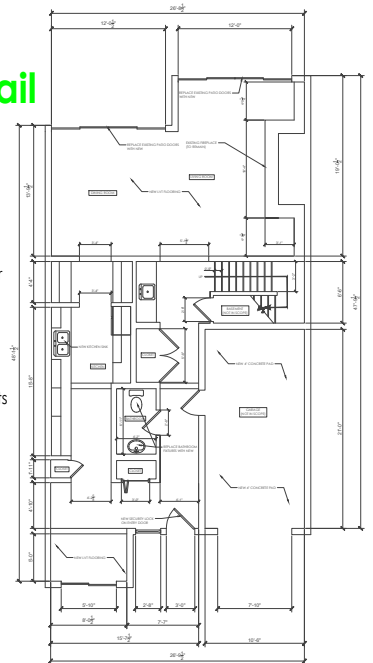
- Detailed door and window blocks
- Room tags
- Room dimensions
- Plumbing fixtures
- Generic exterior elevations
- Ceiling heights



### High Detail

#### Includes everything from Medium Detail and:

- Detailed dimensions
- Annotations
- Detailed exterior elevations
- Detailed interior elevations
- Electrical outlets
- Lighting Fixtures
- Mechanical Units
- Door and window schedule



## FIFTH FACTOR Data Delivery

Once you have decided on a set of final deliverables, we will need to know how to get the data over to you. Since there are a wide variety of options, you'll need to provide us with which ones will work best for you.

### Jot down some quick information, like:

- What operating system are you using?
- What software are you using?
- What file format would you like your data in?

## SEVENTH FACTOR Site Access

Are you looking to scan a site that is restricted (like a processing plant) or one that can only be scanned at night (like an airport terminal)? We will need to know your site access plan to complete their work.

### Record information like:

- Is there security? If so, will we need access?
- Will we need a manager to let us in? Do we need an escort?
- Will we need to scan at night? If so, during what hours is the site open for scanning?
- Are there entry requirements before being allowed on-site?
- Is there lighting and power on-site?





## Answer what you can

We have included a questionnaire form for you to fill out as you read through this to assist in gathering your information and answers and identify any questions you may have for us in this process. This will help prepare both yourself and us in providing an accurate and timely quote for your project.

If you're considering laser scanning and need help answering these questions or determining if laser scanning is right for you, call us at [716-447-9698](tel:716-447-9698) or email [info@caddrafting.com](mailto:info@caddrafting.com)

Our team can assess your needs and help you determine the best course of action.



Professional Drafting Service  
Architecture | Engineering | Construction Support | LiDAR Scanning  
[716-447-9698](tel:716-447-9698) | [www.CADdrafting.com](http://www.CADdrafting.com) | [info@CADdrafting.com](mailto:info@CADdrafting.com)

# Professional Drafting Service LiDAR Scanning Questionnaire

Name: \_\_\_\_\_ Phone Number: \_\_\_\_\_

Project Name: \_\_\_\_\_ Company Name: \_\_\_\_\_

Project Address: \_\_\_\_\_ Company Address: \_\_\_\_\_

## First Factor Questions:

What is your overall goal for using LiDAR Scanning? \_\_\_\_\_  
\_\_\_\_\_

## Second Factor Questions:

How many square feet do you need scanned? \_\_\_\_\_

How many floors? \_\_\_\_\_ How many rooms? \_\_\_\_\_

Is the property currently occupied?  Yes  No

Does the project cover the interior or the exterior or both?  Interior  Exterior  Both

Does the space contain large quantities of reflective material such as glass or mirrors?  Yes  No

## Third Factor Questions:

Do you want us to create 2D Plans and/or a 3D model?  2D Plans  3D Model

If you checked 2D Plans, what type of plans are you looking for? (Check all that apply)

Floor Plan(s) Qty: \_\_\_\_\_  Reflected Ceiling Plan(s) Qty: \_\_\_\_\_  MEP Plan(s) Qty: \_\_\_\_\_

Exterior Elevation(s) Qty: \_\_\_\_\_  Building Section(s) Qty: \_\_\_\_\_  Interior Elevation(s) Qty: \_\_\_\_\_

## Fourth Factor Questions:

Are you looking for accurate as-built drawings or design development plans?  As-Builts  Design Development

To what level of detail do you require?  Low Detail  Medium Detail  High Detail

Do you need different rooms drafted at different levels of detail?  Yes  No

## Fifth Factor Questions:

What OS are you using? \_\_\_\_\_ What software are you using? \_\_\_\_\_

What file format will you need the information in? \_\_\_\_\_

## Sixth Factor Questions:

Do you need a Purchase Order for us to begin work?  Yes  No

What is your overall timeline for this project? \_\_\_\_\_

Are there any key dates that we should know about? \_\_\_\_\_

## Seventh Factor Questions:

Will we require additional support on-site?  Yes  No Is there lighting/power on-site?  Yes  No

Please email the completed form to [info@CADdrafting.com](mailto:info@CADdrafting.com) and we will contact you to discuss your project! Thank you!